



Europe €19.95  
UK £14  
Japan ¥3.990  
Korea 40.000 WON  
Canada \$29.50  
USA \$19.95

APR/MAY  
2012

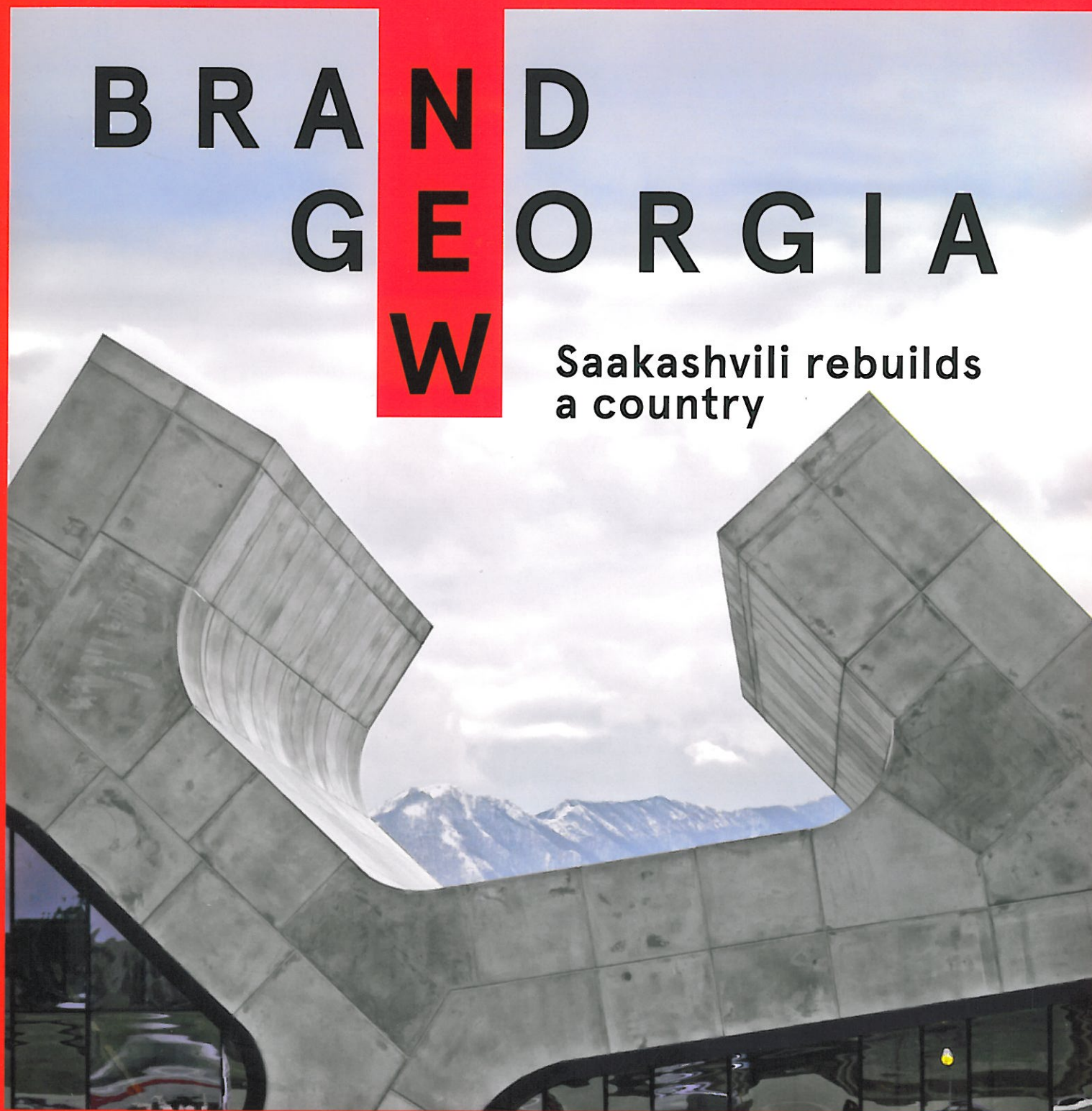
37

ANOTHER  
ARCHITECTURE

# NARK

## BRAND GEORGIA W

Saakashvili rebuilds  
a country



**TC Boyle** 'FL Wright  
was an egomaniac'

**Selgascano** flash  
the plastic

**Nigel Coates** 'Sex  
in design is taboo'

**Stuttgart Library**  
Controversy in Germany



# GraberPulver inserts a school into a metal mould



Text Katharina Marchal

Photos Georg Aerni

Since last autumn a building 171 m long, clad in aluminium panels, has lined the die-straight Route de la Fonderie in Fribourg, Switzerland. There's a reason GraberPulver Architekten of Bern compares the volume to an extruded moulding from a metalworking factory: the edifice houses the Ecole des Métiers EMF, a vocational school for technical professions. The industrial look and the large scale of the building are at home in this neighbourhood, which has an industrial history but has evolved over the last several years into Fribourg's campus.

The school's internal organization was influenced by the site's topography. The street level is lower than the rear

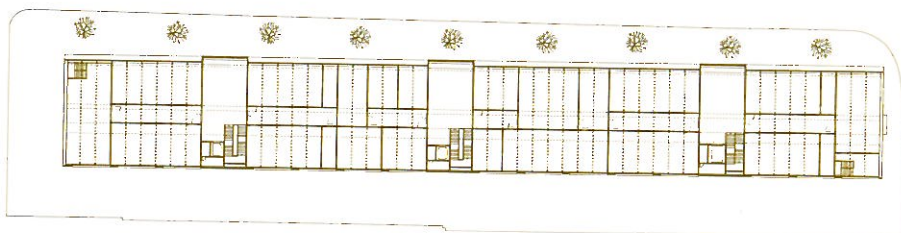
of the building, where the entrance is located. This turns the ground floor into a *piano nobile*. The entrance lobby, stretching from the auditorium at one end of the building to the gymnasium at the other, features a façade made entirely of glass on the street side and so serves as the 'school's display window', as the architects put it. There is sufficient room here for a cafeteria, exhibitions and informal meetings between students and teachers. The workshops are housed under the folded, open roof structure and ideally lit by north-facing windows. The classrooms are located on the intermediary storey, on either side of a central corridor.

Three stairwells divide the long

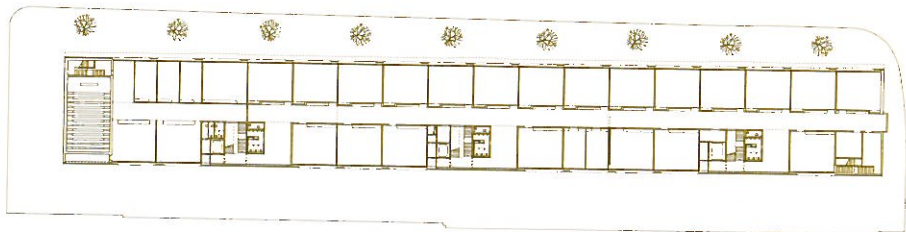
building into four sections. On the top storey, the landings open out and run from the front façade to the rear. They are lined on the street façade by angled glass bays, which thanks to their refined detailing are reminiscent of the large windows of artists' studios.

[graberpulver.ch](http://graberpulver.ch)

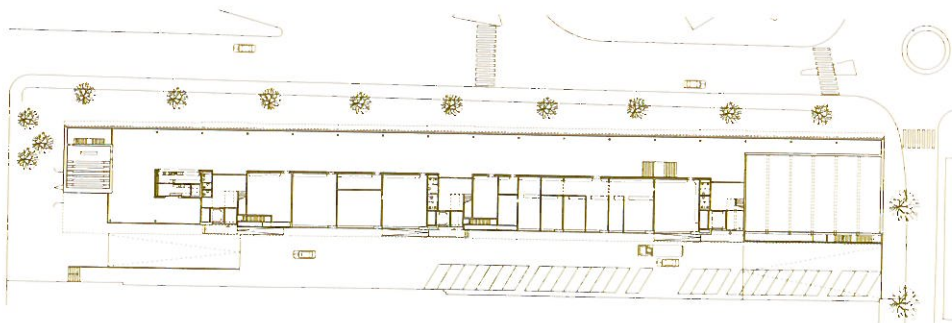




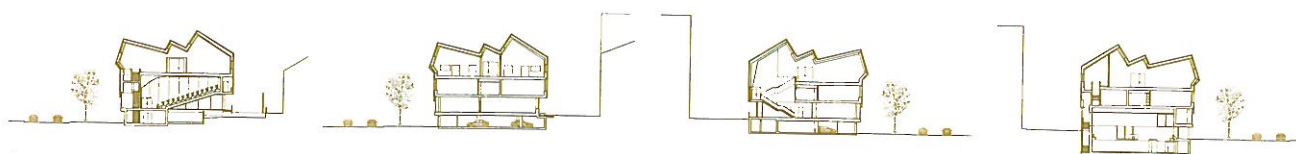
Second floor.



First floor.



Ground floor.



Cross sections.

